



**India Meteorological Department
(Ministry of Earth Sciences)**

HOURLY UPDATE ON SEVERE CYCLONIC STORM “DANA”

BULLETIN NO. 10

DATE: 25-10-2024

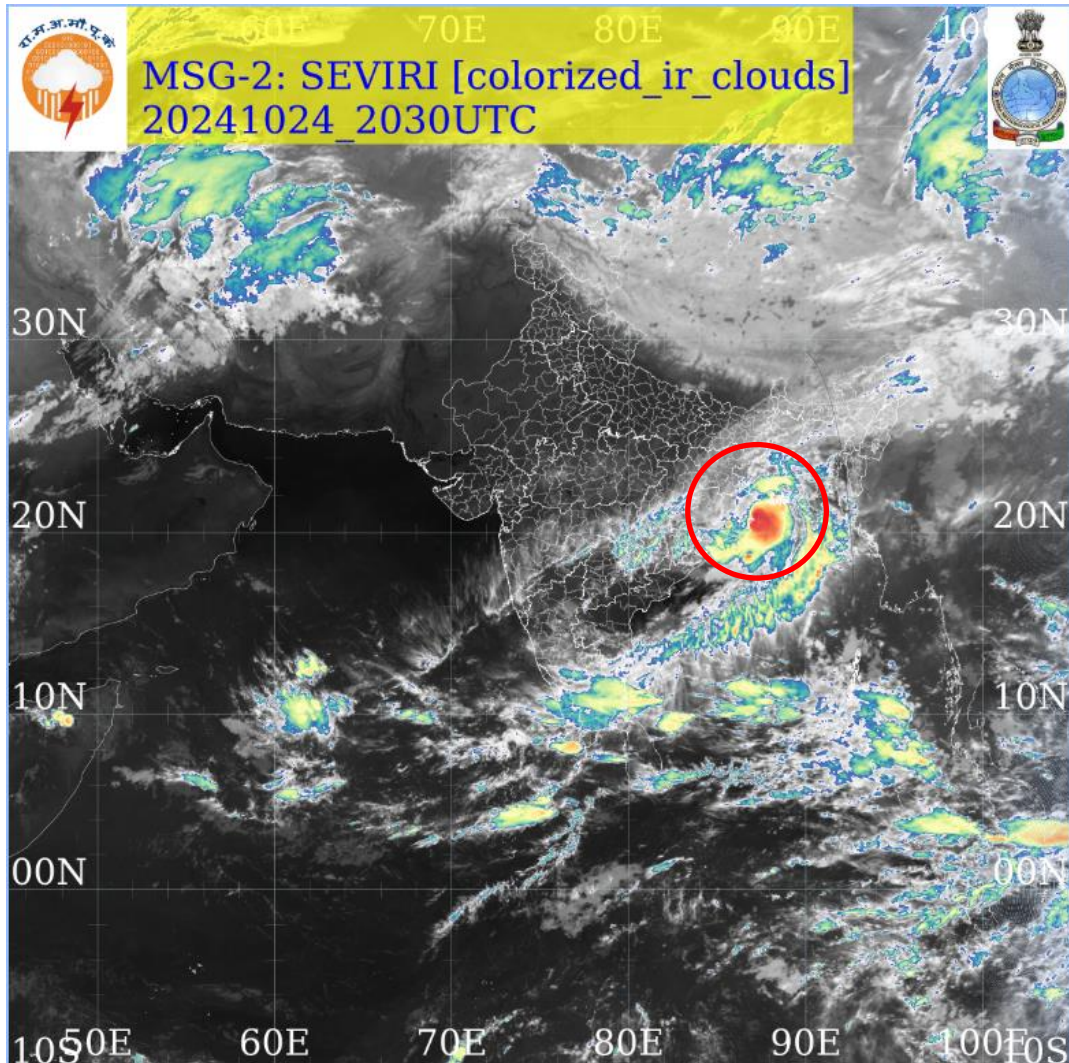
TIME OF ISSUE: 0315 HRS IST

DATE/TIME (IST) OF OBSERVATION	BASED ON 25-10-2024 (0230 HRS IST)
LOCATION LATITUDE/LONGITUDE	THE SEVERE CYCLONIC STORM “DANA” (PRONOUNCED AS DANA) OVER NORTHWEST BAY OF BENGAL MOVED NORTH-NORTHWESTWARDS WITH A SPEED OF 17 KMPH DURING PAST 06 HOURS AND LAY CENTRED AT 0230 HRS IST OF TODAY, THE 25TH OCTOBER, OVER ODISHA COAST NEAR LATITUDE 20.75° N AND LONGITUDE 86.95°E, ABOUT 10 KM SOUTHEAST OF DHAMARA AND 10 KM NORTH-NORTHWEST OF HABALIKHATI NATURE CAMP (BHITARKANIKA). LATEST OBSERVATIONS INDICATE THAT THE SYSTEM IS CROSSING THE COAST.
CURRENT INTENSITY WIND SPEED	SEVERE CYCLONIC STORM 100-110 KMPH GUSTING TO 120 KMPH
FORECAST	LATEST OBSERVATIONS INDICATE THAT THE SYSTEM IS CROSSING THE NORTH ODISHA COAST CLOSE TO HABALIKHATI NATURE CAMP (BHITARKANIKA) AND DHAMARA AS A SEVERE CYCLONIC STORM WITH A WIND SPEED OF 100-110 KMPH GUSTING TO 120 KMPH. <i>LANDFALL PROCESS CONTINUES AND THE FORWARD SECTOR OF THE WALL CLOUD REGION HAS ENTERED INTO THE LAND. THE LANDFALL PROCESS WOULD CONTINUE TILL TODAY, THE 25TH OCTOBER MORNING.</i> <i>AFTER LANDFALL IT IS LIKELY TO MOVE NEARLY WEST-NORTHWESTWARDS ACROSS NORTH ODISHA AND WEAKEN GRADUALLY INTO A CYCLONIC STORM BY FORENOON OF TODAY, THE 25TH OCTOBER.</i> THE SYSTEM IS UNDER CONTINUOUS SURVEILLANCE OF THE DOPPLER WEATHER RADAR AT PARADIP.

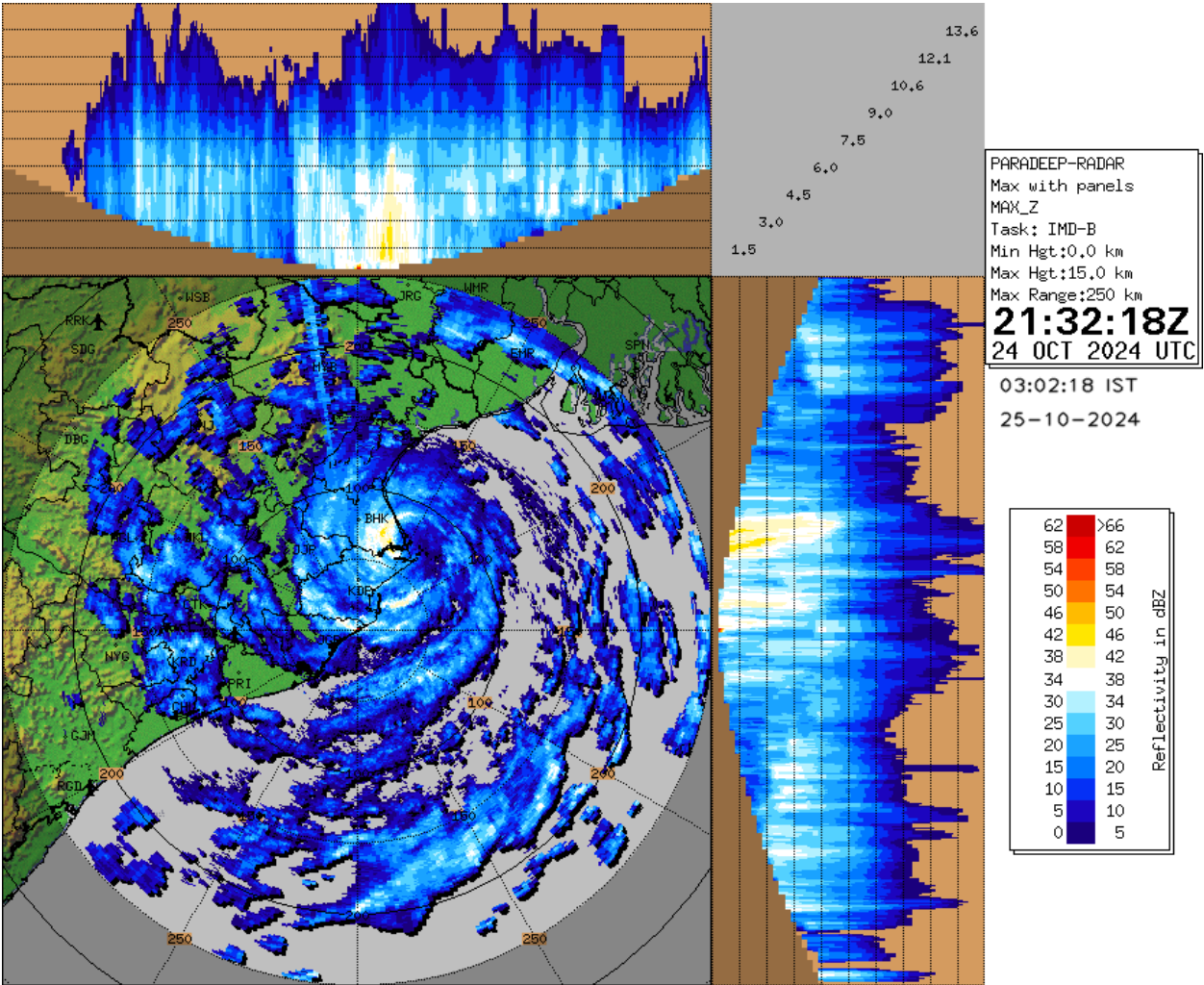
OBSERVED WEATHER:

STATION	RAINFALL (MM) (0830-0230 HRS IST)	WINDSPEED (KMPH) AT 0230 HRS IST	STATION	RAINFALL (0830-0230 HRS IST)	WINDSPEED (KMPH) AT 0230 HRS IST
BHUBANESWAR	17.1	15/NNWLY	HALDIA	43.0	11/ENEYLY
BALASORE	37.6	25/NELY	DIGHA	36.0	30/ESELY
CHANDBALI	65.6	45/NWLY			
PARADIP	49.9	22/WWLY			
PURI	16.8	18/NNWLY			

SATELLITE IMAGERY

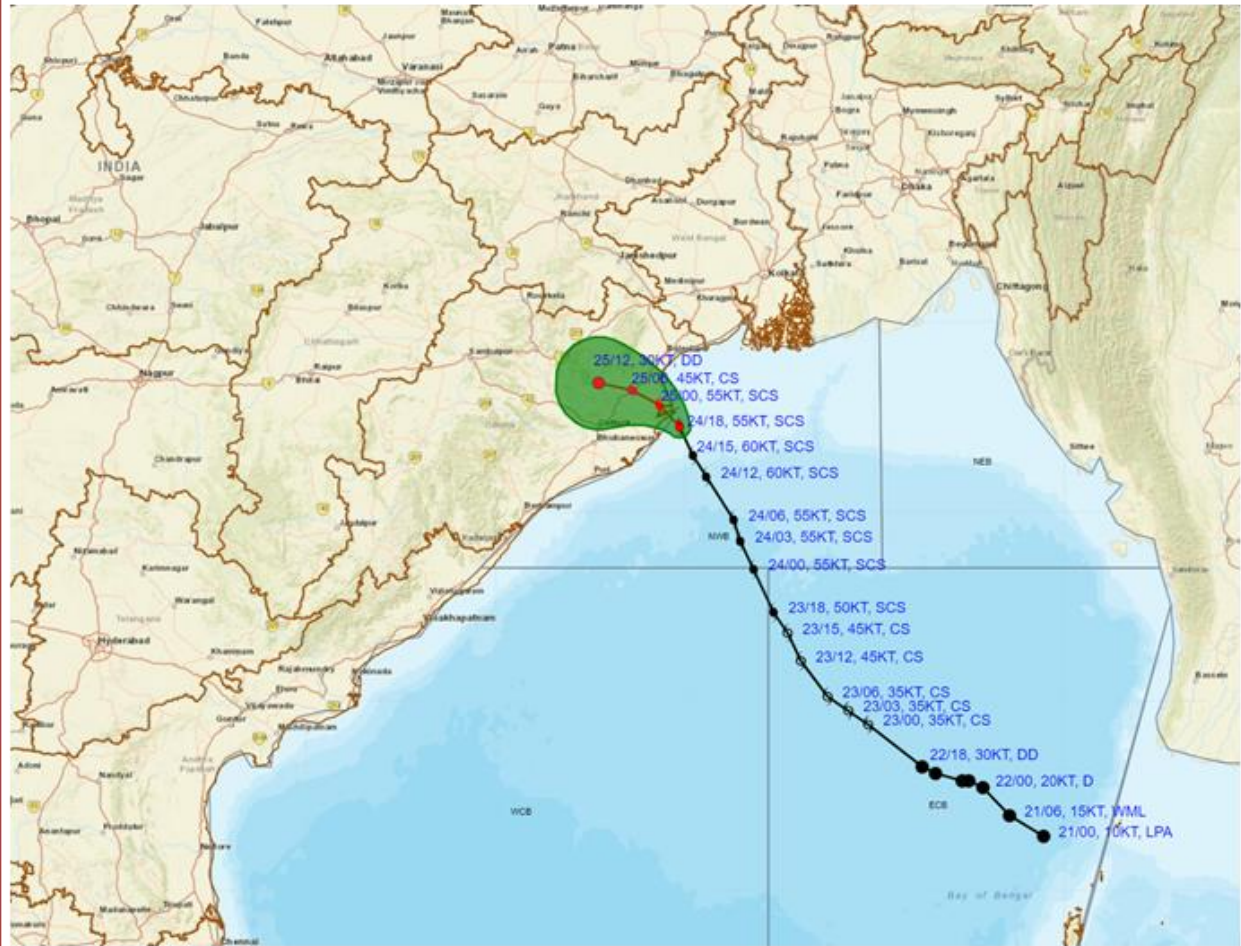


RADAR OBSERVATIONS (MAX_Z) OF DWR PARADIP





OBSERVED AND FORECAST TRACK ALONGWITH CONE OF UNCERTAINTY OF SEVERE CYCLONIC STORM 'DANA' OVER NORTHWEST BAY OF BENGAL BASED ON 1800 UTC (2330 Hrs. IST) OF 24th OCTOBER 2024



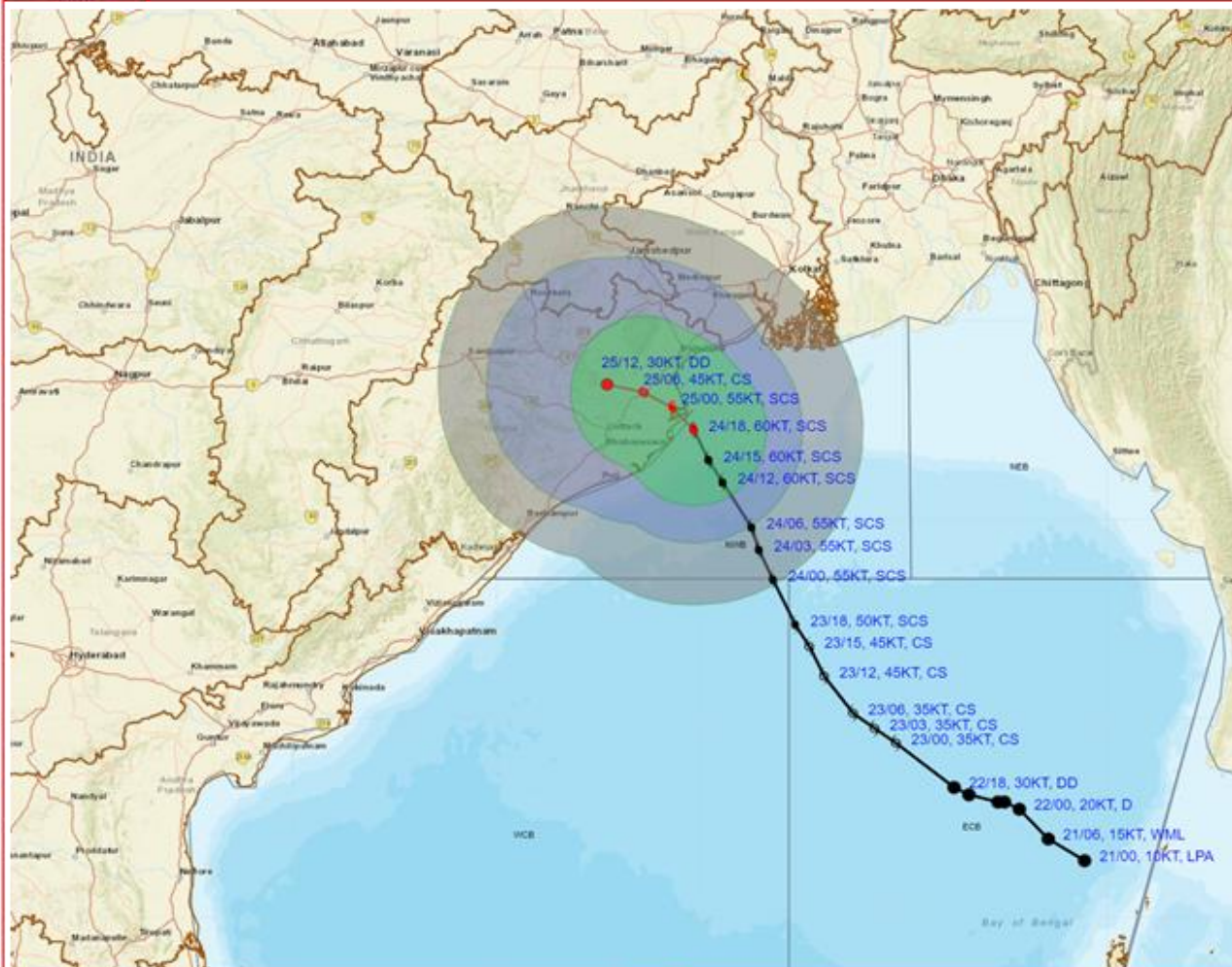
DATE/TIME : IN UTC
 IST : UTC + 0530
 KT : NAUTICAL MILE S/HOUR = 1.85 KM/HOUR
 LPA : LOW PRESSURE AREA
 WML : WELL MARKED LOW PRESSURE AREA
 D : DEPRESSION (17-27 KT)
 DD : DEEP DEPRESSION (28-33 KT)
 CS : CYCLONIC STORM (34-47 KT)
 SCS : SEVERE CYCLONIC STORM (48-63 KT)
 VSCS : VERY SEVERE CYCLONIC STORM (64-89 KT)
 ESCS : EXTREMELY SEVERE CYCLONIC STORM (90-119 KT)
 SuCS : SUPER CYCLONIC STORM (≥120 KT)

● LESS THAN 34 KT
 ○ 34-47 KT
 ○ ≥ 48 KT
 — OBSERVED TRACK
 — FORECAST TRACK
 ▲ CONE OF UNCERTAINTY

Forecast	DISTANCE (KM) AND DIRECTION FROM STATIONS		
Date and Time (UTC)	PARADIP (CWR)	DHAMARA	SAGAR ISLAND
24.10.24/1800	50, ENE	40, SSE	160, SW



OBSERVED AND FORECAST TRACK ALONGWITH QUADRANT WIND DISTRIBUTION OF SEVERE CYCLONIC STORM 'DANA' OVER NORTHWEST BAY OF BENGAL BASED ON 1800 UTC (2330 Hrs. IST) OF 24th OCTOBER 2024



DATE/TIME : IN UTC
 IST : UTC + 0530
 KT : NAUTICAL MILE S/HOUR = 1.85 KM/HOUR
 LPA : LOW PRESSURE AREA
 WML : WELL MARKED LOW PRESSURE AREA
 D : DEPRESSION (17-27 KT)
 DD : DEEP DEPRESSION (28-33 KT)
 CS : CYCLONIC STORM (34-47 KT)
 SCS : SEVERE CYCLONIC STORM (48-63 KT)
 VSCS : VERY SEVERE CYCLONIC STORM (64-89 KT)
 ESCS : EXTREMELY SEVERE CYCLONIC STORM (90-119 KT)
 SuCS : SUPER CYCLONIC STORM (≥120 KT)

● LESS THAN 34 KT
 ○ 34-47 KT
 ○ ≥ 48 KT
 — OBSERVED TRACK
 — FORECAST TRACK
 ● CONE OF UNCERTAINTY
 AREA OF MAXIMUM SUSTAINED WIND SPEED:
 ■ 28-33 KT (52-61 KMPH)
 ■ 34-49 KT (62-91 KMPH)
 ■ 50-63 KT (92-117 KMPH)
 ■ ≥ 64 KT (≥118 KMPH)

IMPACT OVER THE SEA

MSW (knot/kmph)	Impact	Action
28-33 (52-61)	Very rough seas	Total suspension of fishing operations
34-49 (62-91)	High to very high seas	Total suspension of fishing operations
50-63 (92-117)	Very high seas	Total suspension of fishing operations
≥ 64 (≥118)	Phenomenal	Total suspension of fishing operations